

# USB ID-Cam Pro

## Quick Start Guide

### Accessories

- \* Camera **x** 1
- \* USB Cable **x** 1
- \* Driver Software Disk **x** 1
- \* Quick Start Guide **x** 1

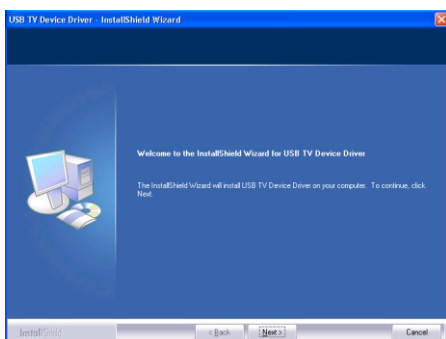
### Minimum Requirements

- \* Windows 2000/XP/Vista
- \* Computer with USB2.0 port
- \* PC: Pentium II or higher-compatible processor with 256MB or more of RAM
- \* 50MB HDD Space
- \* Monitor with 800x600 minimum resolution, 1024x768 recommended

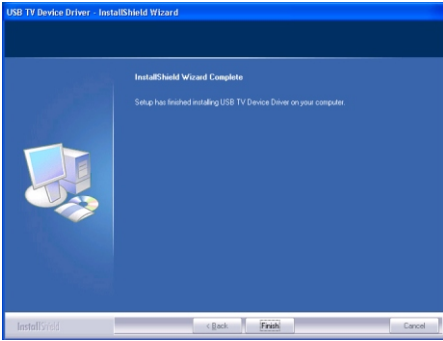
### Driver Installation Guide

**Note: Do not connect the USB ID-Cam PRO to the computer until after driver installation.**

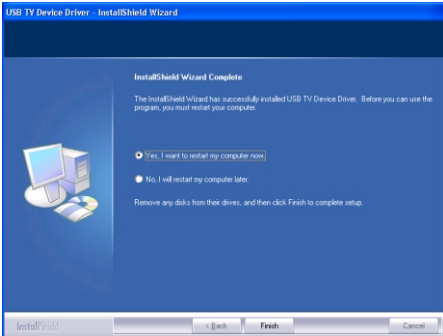
1. Insert the Driver Software Disk to the CD/DVD-ROM drive.
2. Run “**Setup.exe**” located on the installation CD.
3. Click “**Next**” to continue.



4. Click **“Finish”** to complete driver program install.



5. Click **“Finish”** to restart your computer.



3

## Hardware Installation Guide

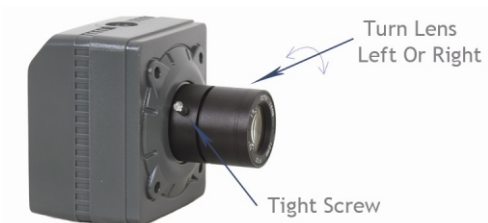
1. Connect the MINI 5P pin of the USB Cable to the MINI USB port on the USB ID-Cam PRO, the 4P pin to the USB port on the computer.
2. The computer will detect new hardware and automatically install the device.
3. Run the **“AMCAP.exe”** program to test the camera.

## Features

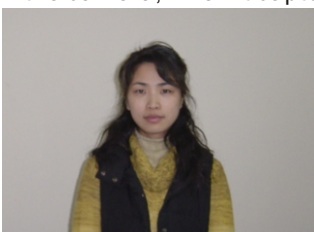
1. TWAIN-compatible; works with all major applications
2. Real time live preview window and fast snap captures

4

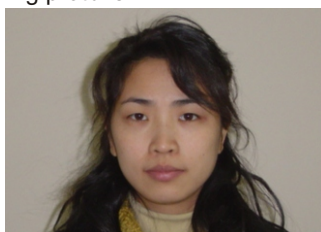
2. Manually adjust the focus when the image is blur.  
Lightly turn lens left or right to focus.



3. To avoid capturing a wide shot then cropping in your software, as this will greatly reduce the printed image quality. Please stand between 3 to 5 feet away from the camera, when it capturing picture.



Too wide picture



Correct picture

5